

REGIONAL PLANNING PROCESS GUIDANCE



CALIFORNIA COMMUNITY COLLEGES

Doing What **MATTERS**™

FOR JOBS AND THE ECONOMY

Javier Romero
Matthew Roberts, Ed.D.

June 24 ,2016
DoingWhatMATTERS.cccco.edu



CALIFORNIA COMMUNITY COLLEGES

Preparing for the \$200M

2014-15

Free the data

Build & QA the LaunchBoard data tool

2016 Q1-2

Train on tools

Train 113 colleges & key talents to use LaunchBoard

- Train the trainer
- Train expert users
- Train campus teams & regional teams

2016 Q3-4

CTE Data Unlocked

Regional Labor Market Gap

Input from WIOA & industry partners, etc,

Deep Dive into Data by Campus

Deep Dive into Data by Region

2017

Invest Strong Workforce \$200M

Data drives program planning

Align and expand regional partnerships

Coordinate and align with other workforce training

Expand quality CTE programs

2018+

Scale Excellence

Strong Workforce Program Principles

Trailer Bill Language 54.5; Section 88821

- CTE offerings responsive to needs of employers
- Collaboration w/LEAs, AEBG, WIBs, CSU, UC
- Evidenced based decision making aligned w/ WIOA accountability measures
- Develop long-term regional partnerships with employers and labor partners



Regional Planning Concept

The intent of the regional plan is to facilitate regional approaches to meeting the supply and demand sides of regional labor markets with a particular emphasis on gaining greater advantage from collaboration across multiple colleges and across multiple workforce development public investments including WIOA, AEBG, K-12, PERKINS



Linkage to the federal Workforce Innovation and Opportunity Act (WIOA)

Regional Plans must include:

- *An analysis of regional labor market needs informed by A WIOA economic analysis....*
- *Measurable regional goals that align with the performance accountability measures of the WIOA....*
- *A description of the alignment of ... plans required pursuant to the WIOA.*



Regional Planning in the First Year

- Identify critical labor market needs and opportunities for collaboration through asset/program mapping
- Identify those who have interests in addressing these needs and opportunities, the interests that motivate them and assets they bring
- Articulate goals and objectives that align with the local priorities through action steps and resources required to meet the need or realize the opportunity. In many cases this will involve identifying the planning process where the need or opportunity will be more fully addressed.



Steps for a Comprehensive Regional Planning

1. Enlist Stakeholder Engagement (WIB, EDD, AE, Business/Industry, etc)
2. Data Collection & Analysis
 - Gather, produce, synthesize Demand and Supply LMI, asset maps of participating systems, current initiatives
3. Convening/Planning
 - Convene stakeholders to review data, set Regional Labor Market priorities, identify and commit to shared Workforce Development Initiatives



Community College Regional Planning Process

4. Governance

- Establish processes and procedures for decision making on Strong Workforce Plan funds including voting structure, escalation, appeal process
- Determination of fiscal agent, structure
- Distribution of funds: local vs regional

5. Community College Planning

- Develop plans based on Regional Planning Process Labor Market Priorities and Shared Workforce Development priorities including relevant stakeholders in planning as appropriate

6. Allocation

- Allocate Strong Workforce Program funds based on plan



Linkage to the 60% Local Share

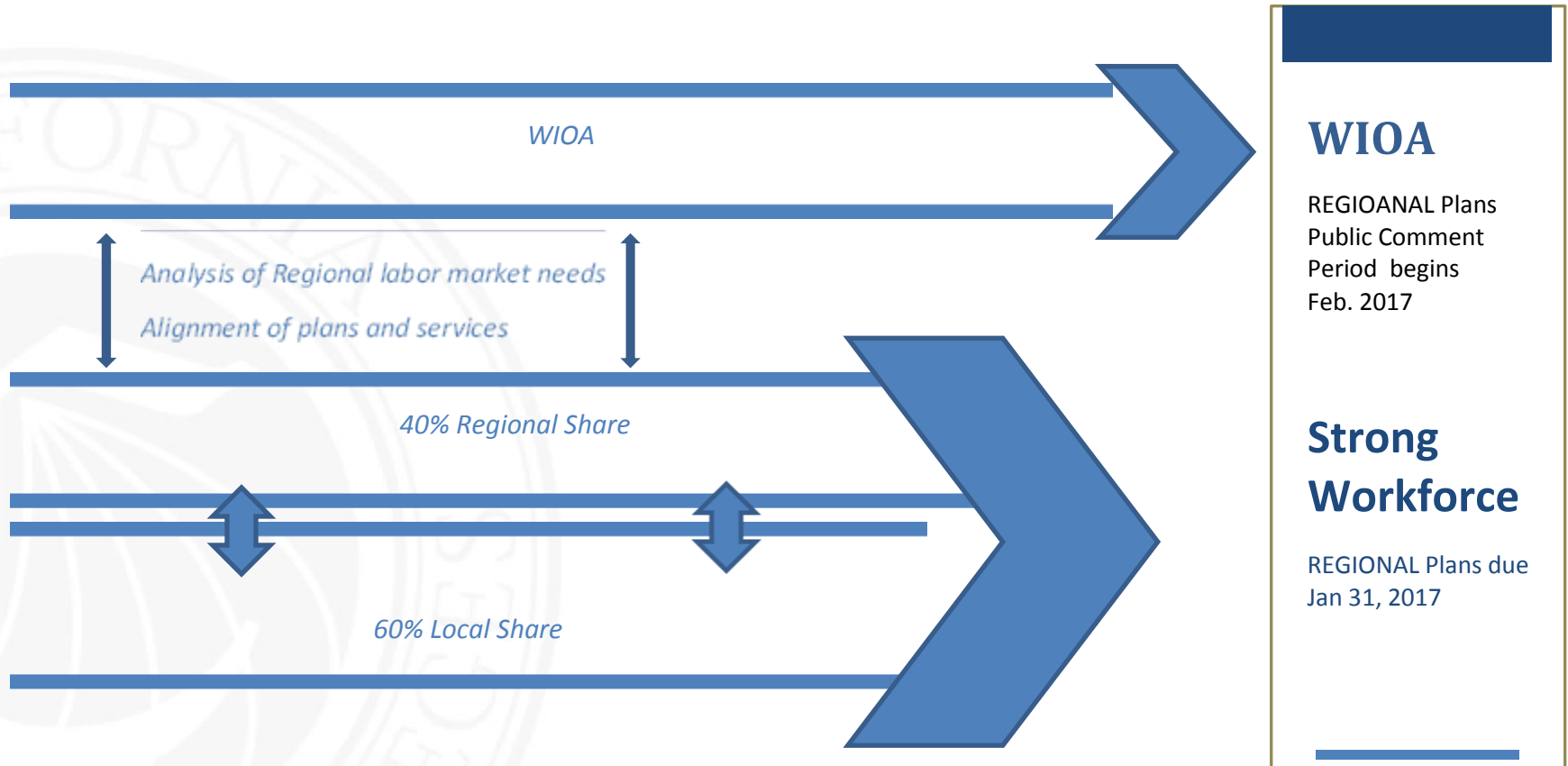
Per Section 88824 (d), as a condition of receipt of local share funding, a community college, must comply with this section of Education Code, which entails:

- Membership of a regional collaborative.
- Participate in WIOA regional planning efforts *and other efforts to align workforce, employment, and education services.*
- Work with members of the collaborative to create and submit a plan to the chancellor by January 31, 2017, **for inclusion in the submissions of regional plans**
- Provide accessible performance and labor-market data and describe efforts to align ... with...regional planning efforts established pursuant to WIOA....



Regional Planning Timeline

July 2016 | Aug 2016 | Sep 2016 | Oct 2016 | Nov 2016 | Dec 2016 | Jan 2017 | Feb 2017 | March 2017



Next Steps...

1. Vet draft regional planning guidance – July 5-8
2. Finalize and distribute template for regional planning – July 13

Doing What Matters for Jobs and the Economy

Visit DoingWhatMatters.cccco.edu

